

Supporting Information for

High-purified Isolation and Proteomic Analysis of Urinary Exosomes from Healthy Persons

Meng Yang ¹, Xiao Zhi ¹, Yanlei Liu ^{1,2}, Tianliang Li ¹, Gabriel Alfranca ¹, Fangfang Xia ¹, Chenlu Li ³, Jie Song ^{1*}, Daxiang Cui ^{1,2*}

¹ Institute of Nano Biomedicine and Engineering, Shanghai Engineering Research Center for Intelligent Instrument for Diagnosis and Therapy, Key Laboratory for Thin Film and Microfabrication of Ministry of Education, Department of Instrument Science and Engineering, School of Electronic Information and Electrical Engineering, 800 Dongchuan Road, Shanghai Jiao Tong University, Shanghai 200240, P. R. China.

² National Center for Translational Medicine, Collaborative Innovative Center for System Biology, Shanghai Jiao Tong University, 800 Dongchuan RD, Shanghai 200240, P. R. China.

³ Key Laboratory of Laboratory Medicine, Ministry of Education of China, Zhejiang Provincial Key Laboratory of Medical Genetics, School of Laboratory Medicine and Life Science, Wenzhou Medical University, Wenzhou, Zhejiang 325035, P. R. China.

* Corresponding authors. E-mail: dx cui@sjtu.edu.cn; sjie@sjtu.edu.cn

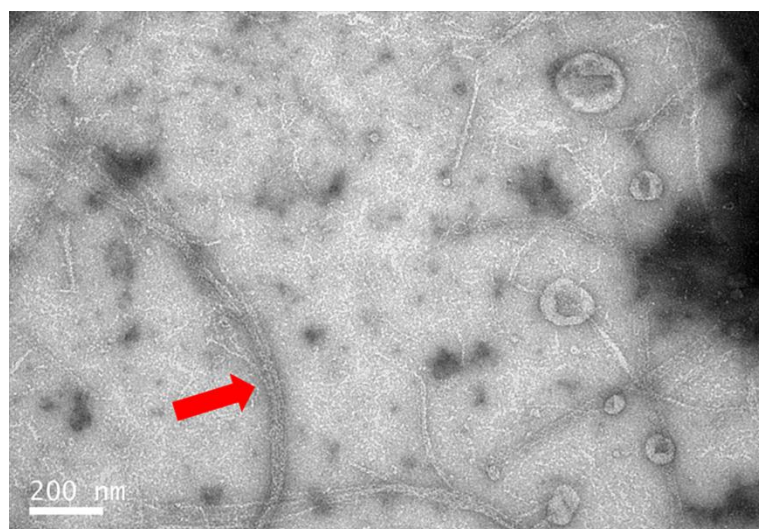


Fig. S1 TEM image of urine after 3 h dialysis, Red arrow pointing at the polymeric filament formed by THP.

Table S1

List of proteins identified by *in-gel* digestion based proteomics in urinary exosomes

NO	Uniprot ID	Protein name
1	K1C10_HUMAN	Keratin, type I cytoskeletal 10 OS=Homo sapiens GN=KRT10 PE=1 SV=6
2	ALBU_HUMAN	Serum albumin OS=Homo sapiens GN=ALB PE=1 SV=2
3	K2C1_HUMAN	Keratin, type II cytoskeletal 1 OS=Homo sapiens GN=KRT1 PE=1 SV=6
4	K1C9_HUMAN	Keratin, type I cytoskeletal 9 OS=Homo sapiens GN=KRT9 PE=1 SV=3
5	K22E_HUMAN	Keratin, type II cytoskeletal 2 epidermal OS=Homo sapiens GN=KRT2 PE=1 SV=2

	IGKC_	
	HUMA	
6	N	Ig kappa chain C region OS=Homo sapiens GN=IGKC PE=1 SV=1
	AMYP	
	_HUM	
7	AN	Pancreatic alpha-amylase OS=Homo sapiens GN=AMY2A PE=1 SV=2
	AMBP	
	_HUM	
8	AN	Protein AMBP OS=Homo sapiens GN=AMBP PE=1 SV=1
	KNG1_	
	HUMA	
9	N	Kininogen-1 OS=Homo sapiens GN=KNG1 PE=1 SV=2
	PTGDS	
	_HUM	
10	AN	Prostaglandin-H2 D-isomerase OS=Homo sapiens GN=PTGDS PE=1 SV=1
	K2C6B	
	_HUM	
11	AN	Keratin, type II cytoskeletal 6B OS=Homo sapiens GN=KRT6B PE=1 SV=5
	UROM	
	_HUM	
12	AN	Uromodulin OS=Homo sapiens GN=UMOD PE=1 SV=1
	AMY2	
	B_HU	
13	MAN	Alpha-amylase 2B OS=Homo sapiens GN=AMY2B PE=1 SV=1
	AMY1	
	_HUM	
14	AN	Alpha-amylase 1 OS=Homo sapiens GN=AMY1A PE=1 SV=2
	PPAP	
	HUMA	
15	N	Prostatic acid phosphatase OS=Homo sapiens GN=ACPP PE=1 SV=3
	K2C5	
	HUMA	
16	N	Keratin, type II cytoskeletal 5 OS=Homo sapiens GN=KRT5 PE=1 SV=3
	K2C6A	
	_HUM	
17	AN	Keratin, type II cytoskeletal 6A OS=Homo sapiens GN=KRT6A PE=1 SV=3
	K2C6C	
	_HUM	
18	AN	Keratin, type II cytoskeletal 6C OS=Homo sapiens GN=KRT6C PE=1 SV=3
	LRP2	
	HUMA	
19	N	Low-density lipoprotein receptor-related protein 2 OS=Homo sapiens GN=LRP2 PE=1 SV=3
	EGF_H	
20	UMAN	Pro-epidermal growth factor OS=Homo sapiens GN=EGF PE=1 SV=2
	PIGR	
	HUMA	
21	N	Polymeric immunoglobulin receptor OS=Homo sapiens GN=PIGR PE=1 SV=4
	IGHG2	
	_HUM	
22	AN	Ig gamma-2 chain C region OS=Homo sapiens GN=IGHG2 PE=1 SV=2
	IGHG1	
	_HUM	
23	AN	Ig gamma-1 chain C region OS=Homo sapiens GN=IGHG1 PE=1 SV=1
	LYAG	
	_HUM	
24	AN	Lysosomal alpha-glucosidase OS=Homo sapiens GN=GAA PE=1 SV=4
	VASN	
	_HUM	
25	AN	Vasorin OS=Homo sapiens GN=VASN PE=1 SV=1
	K1C16	
	_HUM	
26	AN	Keratin, type I cytoskeletal 16 OS=Homo sapiens GN=KRT16 PE=1 SV=4
	K1C14	
	_HUM	
27	AN	Keratin, type I cytoskeletal 14 OS=Homo sapiens GN=KRT14 PE=1 SV=4
	CUBN	
	_HUM	
28	AN	Cubilin OS=Homo sapiens GN=CUBN PE=1 SV=5
	CO6A1	
	_HUM	
29	AN	Collagen alpha-1(VI) chain OS=Homo sapiens GN=COL6A1 PE=1 SV=3
	CD44	
	HUMA	
30	N	CD44 antigen OS=Homo sapiens GN=CD44 PE=1 SV=3
31	CLUS	Clusterin OS=Homo sapiens GN=CLU PE=1 SV=1

	HUMA	
	N	
32	IC1_H UMAN IPSP HUMA	Plasma protease C1 inhibitor OS=Homo sapiens GN=SERPING1 PE=1 SV=2
33	N LAMP 2_HU	Plasma serine protease inhibitor OS=Homo sapiens GN=SERPINA5 PE=1 SV=3
34	MAN KV302 _HUM	Lysosome-associated membrane glycoprotein 2 OS=Homo sapiens GN=LAMP2 PE=1 SV=2
35	_AN KV304 _HUM	Ig kappa chain V-III region SIE OS=Homo sapiens PE=1 SV=1
36	_AN KV305 _HUM	Ig kappa chain V-III region Ti OS=Homo sapiens PE=1 SV=1
37	_AN KV307 _HUM	Ig kappa chain V-III region WOL OS=Homo sapiens PE=1 SV=1
38	_AN PEPA4 _HUM	Ig kappa chain V-III region GOL OS=Homo sapiens PE=1 SV=1
39	_AN PEPA3 _HUM	Pepsin A-4 OS=Homo sapiens GN=PGA4 PE=1 SV=1
40	_AN PEPA5 _HUM	Pepsin A-3 OS=Homo sapiens GN=PGA3 PE=1 SV=1
41	_AN ANAG _HUM	Pepsin A-5 OS=Homo sapiens GN=PGA5 PE=1 SV=1
42	_AN K1C17 _HUM	Alpha-N-acetylglucosaminidase OS=Homo sapiens GN=NAGLU PE=1 SV=2
43	_AN CADH 1_HU	Keratin, type I cytoskeletal 17 OS=Homo sapiens GN=KRT17 PE=1 SV=2
44	MAN K2C78 _HUM	Cadherin-1 OS=Homo sapiens GN=CDH1 PE=1 SV=3
45	_AN CATD _HUM	Keratin, type II cytoskeletal 78 OS=Homo sapiens GN=KRT78 PE=2 SV=2
46	_AN ROCK 2_HU	Cathepsin D OS=Homo sapiens GN=CTSD PE=1 SV=1
47	MAN ZA2G HUMA	Rho-associated protein kinase 2 OS=Homo sapiens GN=ROCK2 PE=1 SV=4
48	N DSC1 HUMA	Zinc-alpha-2-glycoprotein OS=Homo sapiens GN=AZGP1 PE=1 SV=2
49	N ICOSL _HUM	Desmocollin-1 OS=Homo sapiens GN=DSC1 PE=1 SV=2
50	_AN LG3BP _HUM	ICOS ligand OS=Homo sapiens GN=ICOSLG PE=1 SV=2
51	_AN CD14 HUMA	Galectin-3-binding protein OS=Homo sapiens GN=LGALS3BP PE=1 SV=1
52	N CBPQ HUMA	Monocyte differentiation antigen CD14 OS=Homo sapiens GN=CD14 PE=1 SV=2
53	N PGRP2 _HUM	Carboxypeptidase Q OS=Homo sapiens GN=CPQ PE=1 SV=1
54	_AN MGA HUMA	N-acetylmuramoyl-L-alanine amidase OS=Homo sapiens GN=PGLYRP2 PE=1 SV=1
55	N PLAK _HUMA	Maltase-glucoamylase, intestinal OS=Homo sapiens GN=MGAM PE=1 SV=5
56	HUMA	Junction plakoglobin OS=Homo sapiens GN=JUP PE=1 SV=3

	N	
57	PIP_H UMAN SYSM _HUM	Prolactin-inducible protein OS=Homo sapiens GN=PIP PE=1 SV=1
58	AN IGHA1 _HUM	Serine--tRNA ligase, mitochondrial OS=Homo sapiens GN=SARS2 PE=1 SV=1
59	AN IGHA2 _HUM	Ig alpha-1 chain C region OS=Homo sapiens GN=IGHA1 PE=1 SV=2
60	AN TRFE _HUMA	Ig alpha-2 chain C region OS=Homo sapiens GN=IGHA2 PE=1 SV=3
61	N DESP _HUMA	Serotransferrin OS=Homo sapiens GN=TF PE=1 SV=3
62	N AMPN _HUM	Desmoplakin OS=Homo sapiens GN=DSP PE=1 SV=3
63	AN KCNH 2_HU	Aminopeptidase N OS=Homo sapiens GN=ANPEP PE=1 SV=4
64	MAN DIAC _HUMA	Potassium voltage-gated channel subfamily H member 2 OS=Homo sapiens GN=KCNH2 PE=1 SV=1
65	N LAC7 _HUMA	Di-N-acetylchitobiase OS=Homo sapiens GN=CTBS PE=1 SV=1
66	N LAC1 _HUMA	Ig lambda-7 chain C region OS=Homo sapiens GN=IGLC7 PE=4 SV=2
67	N IGLL5 _HUM	Ig lambda-1 chain C regions OS=Homo sapiens GN=IGLC1 PE=1 SV=1
68	AN LAC6 _HUMA	Immunoglobulin lambda-like polypeptide 5 OS=Homo sapiens GN=IGLL5 PE=2 SV=2
69	N LAC2 _HUMA	Ig lambda-6 chain C region OS=Homo sapiens GN=IGLC6 PE=4 SV=1
70	N LAC3 _HUMA	Ig lambda-2 chain C regions OS=Homo sapiens GN=IGLC2 PE=1 SV=1
71	N MGAL _HUM	Ig lambda-3 chain C regions OS=Homo sapiens GN=IGLC3 PE=1 SV=1
72	AN NEP_H UMAN UFO _HUMA	Probable maltase-glucoamylase 2 OS=Homo sapiens GN=MGAM2 PE=2 SV=3
73	N FETU A_HU	Neprilysin OS=Homo sapiens GN=MME PE=1 SV=2
74	MAN THIO _HUMA	Tyrosine-protein kinase receptor UFO OS=Homo sapiens GN=AXL PE=1 SV=3
75	N RELN _HUMA	Alpha-2-HS-glycoprotein OS=Homo sapiens GN=AHSG PE=1 SV=1
76	N RELN _HUMA	Thioredoxin OS=Homo sapiens GN=TXN PE=1 SV=3
77	N 1433S _HUMA	Reelin OS=Homo sapiens GN=RELN PE=1 SV=3
78	N ARI4B _HUM	14-3-3 protein sigma OS=Homo sapiens GN=SFN PE=1 SV=1
79	AN IFNB _HUMA	AT-rich interactive domain-containing protein 4B OS=Homo sapiens GN=ARID4B PE=1 SV=2
80	N CERU _HUMA	Interferon beta OS=Homo sapiens GN=IFNB1 PE=1 SV=1
81	N	Ceruloplasmin OS=Homo sapiens GN=CP PE=1 SV=1

	TM198	
	_HUM	
82	AN	Transmembrane protein 198 OS=Homo sapiens GN=TMEM198 PE=1 SV=1
	SCAFB	
	_HUM	
83	AN	Protein SCAF11 OS=Homo sapiens GN=SCAF11 PE=1 SV=2
	DSG1	
	HUMA	
84	N	Desmoglein-1 OS=Homo sapiens GN=DSG1 PE=1 SV=2
	PRDX2	
	_HUM	
85	AN	Peroxiredoxin-2 OS=Homo sapiens GN=PRDX2 PE=1 SV=5
	FILA2	
	_HUM	
86	AN	Filaggrin-2 OS=Homo sapiens GN=FLG2 PE=1 SV=1
	DAF	
	HUMA	
87	N	Complement decay-accelerating factor OS=Homo sapiens GN=CD55 PE=1 SV=4
	BGAL	
	_HUM	
88	AN	Beta-galactosidase OS=Homo sapiens GN=GLB1 PE=1 SV=2
	CFA74	
	_HUM	
89	AN	Cilia- and flagella-associated protein 74 OS=Homo sapiens GN=CFAP74 PE=2 SV=3
	CEL_H	
90	UMAN	Bile salt-activated lipase OS=Homo sapiens GN=CEL PE=1 SV=3
	DCD	
	HUMA	
91	N	Dermcidin OS=Homo sapiens GN=DCD PE=1 SV=2
	BTD	
	HUMA	
92	N	Biotinidase OS=Homo sapiens GN=BTD PE=1 SV=2
	SYCP1	
	_HUM	
93	AN	Synaptonemal complex protein 1 OS=Homo sapiens GN=SYCP1 PE=1 SV=2
	RS27A	
	_HUM	
94	AN	Ubiquitin-40S ribosomal protein S27a OS=Homo sapiens GN=RPS27A PE=1 SV=2
	POF1B	
	_HUM	
95	AN	Protein POF1B OS=Homo sapiens GN=POF1B PE=1 SV=3
	VPS4B	
	_HUM	
96	AN	Vacuolar protein sorting-associated protein 4B OS=Homo sapiens GN=VPS4B PE=1 SV=2
	B4GA1	
	_HUM	
97	AN	Beta-1,4-glucuronyltransferase 1 OS=Homo sapiens GN=B4GAT1 PE=1 SV=1
	MADC	
	A_HU	
98	MAN	Mucosal addressin cell adhesion molecule 1 OS=Homo sapiens GN=MADCAM1 PE=1 SV=2
	HIP1R	
	_HUM	
99	AN	Huntingtin-interacting protein 1-related protein OS=Homo sapiens GN=HIP1R PE=1 SV=2
	DSC3	
	HUMA	
100	N	Desmocollin-3 OS=Homo sapiens GN=DSC3 PE=1 SV=3
	PGFRL	
	_HUM	
101	AN	Platelet-derived growth factor receptor-like protein OS=Homo sapiens GN=PDGFRL PE=1 SV=1
	TEN1	
	_HUMA	
102	N	Teneurin-1 OS=Homo sapiens GN=TENM1 PE=1 SV=2
	BGLR	
	HUMA	
103	N	Beta-glucuronidase OS=Homo sapiens GN=GUSB PE=1 SV=2
	SRRM	
	1_HU	
104	MAN	Serine/arginine repetitive matrix protein 1 OS=Homo sapiens GN=SRRM1 PE=1 SV=2
	FUCO	
	_HUMA	
105	N	Tissue alpha-L-fucosidase OS=Homo sapiens GN=FUCA1 PE=1 SV=4
	KV313	
	_HUM	
106	AN	Ig kappa chain V-III region HIC OS=Homo sapiens PE=1 SV=2
107	HEXA	Beta-hexosaminidase subunit alpha OS=Homo sapiens GN=HEXA PE=1 SV=2

	_HUM	
	AN	
	FABP5	
	_HUM	
108	AN	Fatty acid-binding protein, epidermal OS=Homo sapiens GN=FABP5 PE=1 SV=3
	CAD11	
	_HUM	
109	AN	Cadherin-11 OS=Homo sapiens GN=CDH11 PE=2 SV=2
	COG4	
	HUMA	
110	N	Conserved oligomeric Golgi complex subunit 4 OS=Homo sapiens GN=COG4 PE=1 SV=3
	ENOX	
	1_HU	
111	MAN	Ecto-NOX disulfide-thiol exchanger 1 OS=Homo sapiens GN=ENOX1 PE=1 SV=1
	NPS3A	
	_HUM	
112	AN	Protein NipSnap homolog 3A OS=Homo sapiens GN=NIPSNAP3A PE=1 SV=2
	KV312	
	_HUM	
113	AN	Ig kappa chain V-III region HAH OS=Homo sapiens PE=2 SV=1
	LYVE1	
	_HUM	
114	AN	Lymphatic vessel endothelial hyaluronic acid receptor 1 OS=Homo sapiens GN=LYVE1 PE=1 SV=2
	CDK4	
	HUMA	
115	N	Cyclin-dependent kinase 4 OS=Homo sapiens GN=CDK4 PE=1 SV=2
	FINC	
	HUMA	
116	N	Fibronectin OS=Homo sapiens GN=FN1 PE=1 SV=4
	CPNE3	
	_HUM	
117	AN	Copine-3 OS=Homo sapiens GN=CPNE3 PE=1 SV=1
	GGT1	
	HUMA	
118	N	Gamma-glutamyltranspeptidase 1 OS=Homo sapiens GN=GGT1 PE=1 SV=2
	PCP_H	
119	UMAN	Lysosomal Pro-X carboxypeptidase OS=Homo sapiens GN=PRCP PE=1 SV=1
	G3P_H	
120	UMAN	Glyceraldehyde-3-phosphate dehydrogenase OS=Homo sapiens GN=GAPDH PE=1 SV=3
	REG4	
	HUMA	
121	N	Regenerating islet-derived protein 4 OS=Homo sapiens GN=REG4 PE=1 SV=1
	SNX25	
	_HUM	
122	AN	Sorting nexin-25 OS=Homo sapiens GN=SNX25 PE=1 SV=2
	VPS4A	
	_HUM	
123	AN	Vacuolar protein sorting-associated protein 4A OS=Homo sapiens GN=VPS4A PE=1 SV=1
	HGFA	
	_HUM	
124	AN	Hepatocyte growth factor activator OS=Homo sapiens GN=HGFA PE=1 SV=1
	ANGT	
	_HUM	
125	AN	Angiotensinogen OS=Homo sapiens GN=AGT PE=1 SV=1
	MED1	
	7_HU	
126	MAN	Mediator of RNA polymerase II transcription subunit 17 OS=Homo sapiens GN=MED17 PE=1 SV=2
	NEUR	
	4_HU	
127	MAN	Sialidase-4 OS=Homo sapiens GN=NEU4 PE=1 SV=3
	ARG1	
	_HUM	
128	AN	Arginase-1 OS=Homo sapiens GN=ARG1 PE=1 SV=2
	PLIN4	
	_HUM	
129	AN	Perilipin-4 OS=Homo sapiens GN=PLIN4 PE=1 SV=2
	MYCB	
	2_HU	
130	MAN	E3 ubiquitin-protein ligase MYCBP2 OS=Homo sapiens GN=MYCBP2 PE=1 SV=3
	CC121	
	_HUM	
131	AN	Coiled-coil domain-containing protein 121 OS=Homo sapiens GN=CCDC121 PE=1 SV=1
	SOCS2	
	_HUM	
132	AN	Suppressor of cytokine signaling 2 OS=Homo sapiens GN=SOCS2 PE=1 SV=1

133	CBG_ HUMA N	Corticosteroid-binding globulin OS=Homo sapiens GN=SERPINA6 PE=1 SV=1
134	CNNM 1_HU MAN ARSA_ HUMA	Metal transporter CNNM1 OS=Homo sapiens GN=CNNM1 PE=2 SV=3
135	N GLRX 1_HU	Arylsulfatase A OS=Homo sapiens GN=ARSA PE=1 SV=3
136	MAN UBC_ HUMA	Glutaredoxin-1 OS=Homo sapiens GN=GLRX PE=1 SV=2
137	N CLN5_ HUMA	Polyubiquitin-C OS=Homo sapiens GN=UBC PE=1 SV=3
138	N TGM3 _HUM	Ceroid-lipofuscinosis neuronal protein 5 OS=Homo sapiens GN=CLN5 PE=1 SV=2
139	AN VAT1_ HUMA	Protein-glutamine gamma-glutamyltransferase E OS=Homo sapiens GN=TGM3 PE=1 SV=4
140	N IL36G_ HUMA	Synaptic vesicle membrane protein VAT-1 homolog OS=Homo sapiens GN=VAT1 PE=1 SV=2
141	N NCOA 5_HU	Interleukin-36 gamma OS=Homo sapiens GN=IL36G PE=1 SV=1
142	MAN PVR_H	Nuclear receptor coactivator 5 OS=Homo sapiens GN=NCOA5 PE=1 SV=2
143	UMAN KIF3A _HUM	Poliovirus receptor OS=Homo sapiens GN=PVR PE=1 SV=2
144	AN TPIS_ HUMA	Kinesin-like protein KIF3A OS=Homo sapiens GN=KIF3A PE=1 SV=4
145	N CFAB_ HUMA	Triosephosphate isomerase OS=Homo sapiens GN=TPI1 PE=1 SV=3
146	N UTP4_ HUMA	Complement factor B OS=Homo sapiens GN=CFB PE=1 SV=2
147	N CC88B _HUM	U3 small nucleolar RNA-associated protein 4 homolog OS=Homo sapiens GN=UTP4 PE=1 SV=1
148	AN ACTB L_HU	Coiled-coil domain-containing protein 88B OS=Homo sapiens GN=CCDC88B PE=1 SV=1
149	MAN GNPI1 _HUM	Beta-actin-like protein 2 OS=Homo sapiens GN=ACTBL2 PE=1 SV=2
150	AN NEBU _HUM	Glucosamine-6-phosphate isomerase 1 OS=Homo sapiens GN=GNPDA1 PE=1 SV=1
151	AN GNPI2 _HUM	Nebulin OS=Homo sapiens GN=NEB PE=1 SV=5
152	AN CLPX_ HUMA	Glucosamine-6-phosphate isomerase 2 OS=Homo sapiens GN=GNPDA2 PE=1 SV=1
153	N AACT _HUM	ATP-dependent Clp protease ATP-binding subunit clpX-like, mitochondrial OS=Homo sapiens GN=CLPX PE=1 SV=2
154	AN ZP4_H	Alpha-1-antichymotrypsin OS=Homo sapiens GN=SERPINA3 PE=1 SV=2
155	UMAN S10A9 _HUM	Zona pellucida sperm-binding protein 4 OS=Homo sapiens GN=ZP4 PE=2 SV=1
156	AN SFI1_H	Protein S100-A9 OS=Homo sapiens GN=S100A9 PE=1 SV=1
157	UMAN NFH_ HUMA	Protein SFI1 homolog OS=Homo sapiens GN=SFI1 PE=1 SV=2
158	N	Neurofilament heavy polypeptide OS=Homo sapiens GN=NEFH PE=1 SV=4

	VP13D	
	_HUM	
159	AN	Vacuolar protein sorting-associated protein 13D OS=Homo sapiens GN=VPS13D PE=1 SV=2
	UBB	
	HUMA	
160	N	Polyubiquitin-B OS=Homo sapiens GN=UBB PE=1 SV=1
	CODA	
	1_HU	
161	MAN	Collagen alpha-1(XIII) chain OS=Homo sapiens GN=COL13A1 PE=1 SV=1
	LCAT	
	HUMA	
162	N	Phosphatidylcholine-sterol acyltransferase OS=Homo sapiens GN=LCAT PE=1 SV=1
	HSP72	
	_HUM	
163	AN	Heat shock-related 70 kDa protein 2 OS=Homo sapiens GN=HSPA2 PE=1 SV=1
	NALP2	
	_HUM	
164	AN	NACHT, LRR and PYD domains-containing protein 2 OS=Homo sapiens GN=NLRP2 PE=1 SV=1
	LEG7	
	HUMA	
165	N	Galectin-7 OS=Homo sapiens GN=LGALS7 PE=1 SV=2
	T2R31	
	_HUM	
166	AN	Taste receptor type 2 member 31 OS=Homo sapiens GN=TAS2R31 PE=2 SV=2
	FIGL1	
	_HUM	
167	AN	Fidgetin-like protein 1 OS=Homo sapiens GN=FIGNL1 PE=1 SV=2
	NSUN	
	4_HU	
168	MAN	5-methylcytosine rRNA methyltransferase NSUN4 OS=Homo sapiens GN=NSUN4 PE=1 SV=2
	MOES	
	_HUM	
169	AN	Moesin OS=Homo sapiens GN=MSN PE=1 SV=3
	CDSN	
	HUMA	
170	N	Corneodesmosin OS=Homo sapiens GN=CDSN PE=1 SV=3
	RL40	
	HUMA	
171	N	Ubiquitin-60S ribosomal protein L40 OS=Homo sapiens GN=UBA52 PE=1 SV=2
	DHX57	
	_HUM	
172	AN	Putative ATP-dependent RNA helicase DHX57 OS=Homo sapiens GN=DHX57 PE=1 SV=2
	ATPA	
	HUMA	
173	N	ATP synthase subunit alpha, mitochondrial OS=Homo sapiens GN=ATP5A1 PE=1 SV=1
	SAPL1	
	_HUM	
174	AN	Proactivator polypeptide-like 1 OS=Homo sapiens GN=PSAPL1 PE=2 SV=2
	HSP7C	
	_HUM	
175	AN	Heat shock cognate 71 kDa protein OS=Homo sapiens GN=HSPA8 PE=1 SV=1
	S10A8	
	_HUM	
176	AN	Protein S100-A8 OS=Homo sapiens GN=S100A8 PE=1 SV=1
	THBG	
	_HUM	
177	AN	Thyroxine-binding globulin OS=Homo sapiens GN=SERPINA7 PE=1 SV=2
	C1RL	
	HUMA	
178	N	Complement C1r subcomponent-like protein OS=Homo sapiens GN=C1RL PE=1 SV=2
	MA1A	
	1_HU	
179	MAN	Mannosyl-oligosaccharide 1,2-alpha-mannosidase IA OS=Homo sapiens GN=MAN1A1 PE=1 SV=3
	CYTA	
	_HUM	
180	AN	Cystatin-A OS=Homo sapiens GN=CSTA PE=1 SV=1
	CASPE	
	_HUM	
181	AN	Caspase-14 OS=Homo sapiens GN=CASP14 PE=1 SV=2
	SPTN4	
	_HUM	
182	AN	Spectrin beta chain, non-erythrocytic 4 OS=Homo sapiens GN=SPTBN4 PE=1 SV=2
	S10A7	
	_HUM	
183	AN	Protein S100-A7 OS=Homo sapiens GN=S100A7 PE=1 SV=4

	PROZ_	
	HUMA	
184	N	Vitamin K-dependent protein Z OS=Homo sapiens GN=PROZ PE=1 SV=2
	ANT3_	
	HUMA	
185	N	Antithrombin-III OS=Homo sapiens GN=SERPINC1 PE=1 SV=1
	MYO	
	ME_H	
186	UMAN	Myomegalin OS=Homo sapiens GN=PDE4DIP PE=1 SV=1
	SPB3_	
	HUMA	
187	N	Serpin B3 OS=Homo sapiens GN=SERPINB3 PE=1 SV=2
	PRG2_	
	HUMA	
188	N	Bone marrow proteoglycan OS=Homo sapiens GN=PRG2 PE=1 SV=2
	OSTP	
	HUMA	
189	N	Osteopontin OS=Homo sapiens GN=SPP1 PE=1 SV=1
	SIAE_	
	HUMA	
190	N	Sialate O-acetyltransferase OS=Homo sapiens GN=SIAE PE=1 SV=1
	KPYM	
	_HUM	
191	AN	Pyruvate kinase PKM OS=Homo sapiens GN=PKM PE=1 SV=4
	LIN41_	
	HUMA	
192	N	E3 ubiquitin-protein ligase TRIM71 OS=Homo sapiens GN=TRIM71 PE=1 SV=1
	KPYR_	
	HUMA	
193	N	Pyruvate kinase PKLR OS=Homo sapiens GN=PKLR PE=1 SV=2
	A1BG_	
	HUMA	
194	N	Alpha-1B-glycoprotein OS=Homo sapiens GN=A1BG PE=1 SV=4
	CREG1	
	_HUM	
195	AN	Protein CREG1 OS=Homo sapiens GN=CREG1 PE=1 SV=1
	CLC14	
	_HUM	
196	AN	C-type lectin domain family 14 member A OS=Homo sapiens GN=CLEC14A PE=1 SV=1
	ENOA	
	_HUM	
197	AN	Alpha-enolase OS=Homo sapiens GN=ENO1 PE=1 SV=2
	FSIP2_	
	HUMA	
198	N	Fibrous sheath-interacting protein 2 OS=Homo sapiens GN=FSIP2 PE=2 SV=4
	APOA	
	_HUM	
199	AN	Apolipoprotein(a) OS=Homo sapiens GN=LPA PE=1 SV=1
	TCAL9	
	_HUM	
200	AN	Transcription elongation factor A protein-like 9 OS=Homo sapiens GN=TCEAL9 PE=3 SV=1
	DOCK	
	7_HU	
201	MAN	Dedicator of cytokinesis protein 7 OS=Homo sapiens GN=DOCK7 PE=1 SV=4
	CCD93	
	_HUM	
202	AN	Coiled-coil domain-containing protein 93 OS=Homo sapiens GN=CCDC93 PE=1 SV=2
	HSPB1	
	_HUM	
203	AN	Heat shock protein beta-1 OS=Homo sapiens GN=HSPB1 PE=1 SV=2
	KAIN_	
	HUMA	
204	N	Kallistatin OS=Homo sapiens GN=SERPINA4 PE=1 SV=3
	TF2AY	
	_HUM	
205	AN	TFIIA-alpha and beta-like factor OS=Homo sapiens GN=GTF2A1L PE=1 SV=2
	GCH1	
	HUMA	
206	N	GTP cyclohydrolase 1 OS=Homo sapiens GN=GCH1 PE=1 SV=1
	ZN680	
	_HUM	
207	AN	Zinc finger protein 680 OS=Homo sapiens GN=ZNF680 PE=2 SV=2
	SPE39	
	_HUM	
208	AN	Spermatogenesis-defective protein 39 homolog OS=Homo sapiens GN=VIPAS39 PE=1 SV=1

	DIP2C	
	_HUM	
209	AN	Disco-interacting protein 2 homolog C OS=Homo sapiens GN=DIP2C PE=1 SV=2
	CNTF	
	R_HU	
210	MAN	Ciliary neurotrophic factor receptor subunit alpha OS=Homo sapiens GN=CNTFR PE=1 SV=2
	CBPM	
	_HUM	
211	AN	Carboxypeptidase M OS=Homo sapiens GN=CPM PE=1 SV=2
	MAGC	
	I_HU	
212	MAN	Melanoma-associated antigen C1 OS=Homo sapiens GN=MAGEC1 PE=1 SV=3
	4F2_H	
213	UMAN	4F2 cell-surface antigen heavy chain OS=Homo sapiens GN=SLC3A2 PE=1 SV=3
	ETFA	
	HUMA	
214	N	Electron transfer flavoprotein subunit alpha, mitochondrial OS=Homo sapiens GN=ETFA PE=1 SV=1
	S6A14	
	_HUM	
215	AN	Sodium- and chloride-dependent neutral and basic amino acid transporter B(0+) OS=Homo sapiens GN=SLC6A14 PE=2 SV=1
	EZRI	
	HUMA	
216	N	Ezrin OS=Homo sapiens GN=EZR PE=1 SV=4
	S1A7A	
	_HUM	
217	AN	Protein S100-A7A OS=Homo sapiens GN=S100A7A PE=1 SV=3
	RADI	
	HUMA	
218	N	Radixin OS=Homo sapiens GN=RDX PE=1 SV=1
	SPHM	
	_HUM	
219	AN	N-sulphoglucosaminesulphohydrolase OS=Homo sapiens GN=SGSH PE=1 SV=1
	HEMO	
	_HUM	
220	AN	Hemopexin OS=Homo sapiens GN=HPX PE=1 SV=2
	HIF3A	
	_HUM	
221	AN	Hypoxia-inducible factor 3-alpha OS=Homo sapiens GN=HIF3A PE=1 SV=2
	TEC_H	
222	UMAN	Tyrosine-protein kinase Tec OS=Homo sapiens GN=TEC PE=1 SV=2
	ITIH4	
	HUMA	
223	N	Inter-alpha-trypsin inhibitor heavy chain H4 OS=Homo sapiens GN=ITIH4 PE=1 SV=4
	APOD	
	_HUM	
224	AN	Apolipoprotein D OS=Homo sapiens GN=APOD PE=1 SV=1
	PGBM	
	_HUM	
225	AN	Basement membrane-specific heparan sulfate proteoglycan core protein OS=Homo sapiens GN=HSPG2 PE=1 SV=4
	IGHG3	
	_HUM	
226	AN	Ig gamma-3 chain C region OS=Homo sapiens GN=IGHG3 PE=1 SV=2
	K1C13	
	_HUM	
227	AN	Keratin, type I cytoskeletal 13 OS=Homo sapiens GN=KRT13 PE=1 SV=4
	EPCR	
	HUMA	
228	N	Endothelial protein C receptor OS=Homo sapiens GN=PROCR PE=1 SV=1
	RNAS2	
	_HUM	
229	AN	Non-secretory ribonuclease OS=Homo sapiens GN=RNASE2 PE=1 SV=2
	KV206	
	_HUM	
230	AN	Ig kappa chain V-II region RPMI 6410 OS=Homo sapiens PE=4 SV=1
	KV204	
	_HUM	
231	AN	Ig kappa chain V-II region TEW OS=Homo sapiens PE=1 SV=1
	KV205	
	_HUM	
232	AN	Ig kappa chain V-II region GM607 (Fragment) OS=Homo sapiens PE=4 SV=1
	KV201	
	_HUM	
233	AN	Ig kappa chain V-II region Cum OS=Homo sapiens PE=1 SV=1
	KV203	
	_HUM	
234	HUM	Ig kappa chain V-II region MIL OS=Homo sapiens PE=1 SV=1

	AN	
	CYTC_	
	HUMA	
235	N	Cystatin-C OS=Homo sapiens GN=CST3 PE=1 SV=1
	DNAS	
	1_HU	
236	MAN	Deoxyribonuclease-1 OS=Homo sapiens GN=DNASE1 PE=1 SV=1
	MASP	
	2_HU	
237	MAN	Mannan-binding lectin serine protease 2 OS=Homo sapiens GN=MASP2 PE=1 SV=4
	FBLN3	
	_HUM	
238	AN	EGF-containing fibulin-like extracellular matrix protein 1 OS=Homo sapiens GN=EFEMP1 PE=1 SV=2
	ZG16B	
	_HUM	
239	AN	Zymogen granule protein 16 homolog B OS=Homo sapiens GN=ZG16B PE=1 SV=3
	GP2_H	
240	UMAN	Pancreatic secretory granule membrane major glycoprotein GP2 OS=Homo sapiens GN=GP2 PE=2 SV=3
	DLK1_	
	HUMA	
241	N	Protein delta homolog 1 OS=Homo sapiens GN=DLK1 PE=1 SV=3
	IBP7_	
	HUMA	
242	N	Insulin-like growth factor-binding protein 7 OS=Homo sapiens GN=IGFBP7 PE=1 SV=1
	KLK3_	
	HUMA	
243	N	Prostate-specific antigen OS=Homo sapiens GN=KLK3 PE=1 SV=2
	HPT_H	
244	UMAN	Haptoglobin OS=Homo sapiens GN=HP PE=1 SV=1
	LMAN	
	2_HU	
245	MAN	Vesicular integral-membrane protein VIP36 OS=Homo sapiens GN=LMAN2 PE=1 SV=1
	AIAG1	
	_HUM	
246	AN	Alpha-1-acid glycoprotein 1 OS=Homo sapiens GN=ORM1 PE=1 SV=1
	COFA1	
	_HUM	
247	AN	Collagen alpha-1(XV) chain OS=Homo sapiens GN=COL15A1 PE=1 SV=2
	K1C28	
	_HUM	
248	AN	Keratin, type I cytoskeletal 28 OS=Homo sapiens GN=KRT28 PE=1 SV=2
	APOH_	
	_HUM	
249	AN	Beta-2-glycoprotein 1 OS=Homo sapiens GN=APOH PE=1 SV=3
	ATRN_	
	_HUM	
250	AN	Attractin OS=Homo sapiens GN=ATRN PE=1 SV=2
	SCTM	
	1_HU	
251	MAN	Secreted and transmembrane protein 1 OS=Homo sapiens GN=SECTM1 PE=1 SV=2
	RET4_	
	HUMA	
252	N	Retinol-binding protein 4 OS=Homo sapiens GN=RBP4 PE=1 SV=3
	CADM	
	4_HU	
253	MAN	Cell adhesion molecule 4 OS=Homo sapiens GN=CADM4 PE=1 SV=1
	KV401	
	_HUM	
254	AN	Immunoglobulin kappa variable 4-1 OS=Homo sapiens GN=IGKV4-1 PE=1 SV=1
	ODO2_	
	HUMA	
255	N	Dihydrolipoyllysine-residue succinyltransferase component of 2-oxoglutarate dehydrogenase complex, mitochondrial OS=Homo sapiens GN=DLST PE=1 SV=4
	K2C72	
	_HUM	
256	AN	Keratin, type II cytoskeletal 72 OS=Homo sapiens GN=KRT72 PE=1 SV=2
	K2C74	
	_HUM	
257	AN	Keratin, type II cytoskeletal 74 OS=Homo sapiens GN=KRT74 PE=1 SV=2
	K2C71	
	_HUM	
258	AN	Keratin, type II cytoskeletal 71 OS=Homo sapiens GN=KRT71 PE=1 SV=3
	K2C73	
	_HUM	
259	AN	Keratin, type II cytoskeletal 73 OS=Homo sapiens GN=KRT73 PE=1 SV=1

	PGRP1	
	_HUM	
260	AN	Peptidoglycan recognition protein 1 OS=Homo sapiens GN=PGLYRP1 PE=1 SV=1
	P3IP1	
	HUMA	
261	N	Phosphoinositide-3-kinase-interacting protein 1 OS=Homo sapiens GN=PIK3IP1 PE=1 SV=2
	KV309	
	_HUM	
262	AN	Ig kappa chain V-III region VG (Fragment) OS=Homo sapiens PE=1 SV=1
	REG1	
	A_HU	
263	MAN	Lithostathine-1-alpha OS=Homo sapiens GN=REG1A PE=1 SV=3
	GNS	
	HUMA	
264	N	N-acetylglucosamine-6-sulfatase OS=Homo sapiens GN=GNS PE=1 SV=3
	IGFN1	
	_HUM	
265	AN	Immunoglobulin-like and fibronectin type III domain-containing protein 1 OS=Homo sapiens GN=IGFN1 PE=1 SV=2
	KLK1	
	HUMA	
266	N	Kallikrein-1 OS=Homo sapiens GN=KLK1 PE=1 SV=2
	THRB	
	HUMA	
267	N	Prothrombin OS=Homo sapiens GN=F2 PE=1 SV=2
	ASAH	
	1_HU	
268	MAN	Acid ceramidase OS=Homo sapiens GN=ASAH1 PE=1 SV=5
	A1AT	
	HUMA	
269	N	Alpha-1-antitrypsin OS=Homo sapiens GN=SERPINA1 PE=1 SV=3
	TFF2	
	HUMA	
270	N	Trefoil factor 2 OS=Homo sapiens GN=TFF2 PE=1 SV=2
	CD248	
	_HUM	
271	AN	Endosialin OS=Homo sapiens GN=CD248 PE=1 SV=1
	OSCA	
	R_HU	
272	MAN	Osteoclast-associated immunoglobulin-like receptor OS=Homo sapiens GN=OSCAR PE=1 SV=3
	RNAS1	
	_HUM	
273	AN	Ribonuclease pancreatic OS=Homo sapiens GN=RNASE1 PE=1 SV=4
	DERM	
	_HUM	
274	AN	Dermatopontin OS=Homo sapiens GN=DPT PE=1 SV=2
	NEB2	
	HUMA	
275	N	Neurabin-2 OS=Homo sapiens GN=PPP1R9B PE=1 SV=2
	TETN	
	HUMA	
276	N	Tetranectin OS=Homo sapiens GN=CLEC3B PE=1 SV=3
	YJEN3	
	_HUM	
277	AN	YjeF N-terminal domain-containing protein 3 OS=Homo sapiens GN=YJEFN3 PE=1 SV=1
	PPAL	
	HUMA	
278	N	Lysosomal acid phosphatase OS=Homo sapiens GN=ACP2 PE=1 SV=3
	DYH9	
	HUMA	
279	N	Dynein heavy chain 9, axonemal OS=Homo sapiens GN=DNAH9 PE=1 SV=3
	EFHB	
	HUMA	
280	N	EF-hand domain-containing family member B OS=Homo sapiens GN=EFHB PE=2 SV=4
	CENPF	
	_HUM	
281	AN	Centromere protein F OS=Homo sapiens GN=CENPF PE=1 SV=2
	CAD13	
	_HUM	
282	AN	Cadherin-13 OS=Homo sapiens GN=CDH13 PE=1 SV=1
	HMCN	
	1_HU	
283	MAN	Hemicentin-1 OS=Homo sapiens GN=HMCN1 PE=1 SV=2
	APOE	
	HUMA	
284	N	Apolipoprotein E OS=Homo sapiens GN=APOE PE=1 SV=1

	XPO1_		
	HUMA		
285	N	Exportin-1 OS=Homo sapiens GN=XPO1 PE=1 SV=1	
	ERGI3		
	_HUM	Endoplasmic reticulum-Golgi intermediate compartment protein 3 OS=Homo sapiens GN=ERGIC3 PE=1	
286	AN	SV=1	
	VPS35		
	_HUM		
287	AN	Vacuolar protein sorting-associated protein 35 OS=Homo sapiens GN=VPS35 PE=1 SV=2	
	MMRN		
	2_HU		
288	MAN	Multimerin-2 OS=Homo sapiens GN=MMRN2 PE=1 SV=2	
	KLC2_		
	HUMA		
289	N	Kinesin light chain 2 OS=Homo sapiens GN=KLC2 PE=1 SV=1	
	MCUR		
	1_HU		
290	MAN	Mitochondrial calcium uniporter regulator 1 OS=Homo sapiens GN=MCUR1 PE=1 SV=1	
	CTL2_		
	HUMA		
291	N	Choline transporter-like protein 2 OS=Homo sapiens GN=SLC44A2 PE=1 SV=3	
	PLD1_		
	HUMA		
292	N	Phospholipase D1 OS=Homo sapiens GN=PLD1 PE=1 SV=1	
	PLD2_		
	HUMA		
293	N	Phospholipase D2 OS=Homo sapiens GN=PLD2 PE=1 SV=2	
	PSCA_		
	HUMA		
294	N	Prostate stem cell antigen OS=Homo sapiens GN=PSCA PE=1 SV=1	
	TDR15		
	_HUM		
295	AN	Tudor domain-containing protein 15 OS=Homo sapiens GN=TDRD15 PE=2 SV=1	
	MXRA		
	8_HU		
296	MAN	Matrix-remodeling-associated protein 8 OS=Homo sapiens GN=MXRA8 PE=1 SV=1	
	TRI39		
	_HUMA		
297	N	E3 ubiquitin-protein ligase TRIM39 OS=Homo sapiens GN=TRIM39 PE=1 SV=2	
	A1AG2		
	_HUM		
298	AN	Alpha-1-acid glycoprotein 2 OS=Homo sapiens GN=ORM2 PE=1 SV=2	
	PPM1		
	G_HU		
299	MAN	Protein phosphatase 1G OS=Homo sapiens GN=PPM1G PE=1 SV=1	
	1433G		
	_HUM		
300	AN	14-3-3 protein gamma OS=Homo sapiens GN=YWHAG PE=1 SV=2	
	1433T_		
	HUMA		
301	N	14-3-3 protein theta OS=Homo sapiens GN=YWHAQ PE=1 SV=1	
	1433Z_		
	HUMA		
302	N	14-3-3 protein zeta/delta OS=Homo sapiens GN=YWHAZ PE=1 SV=1	
	1433B_		
	HUMA		
303	N	14-3-3 protein beta/alpha OS=Homo sapiens GN=YWHAB PE=1 SV=3	
	1433F_		
	HUMA		
304	N	14-3-3 protein eta OS=Homo sapiens GN=YWHAH PE=1 SV=4	
	1433E_		
	HUMA		
305	N	14-3-3 protein epsilon OS=Homo sapiens GN=YWHAE PE=1 SV=1	
	TITIN_		
	HUMA		
306	N	Titin OS=Homo sapiens GN=TTN PE=1 SV=4	
	RGSL_		
	HUMA		
307	N	Regulator of G-protein signaling protein-like OS=Homo sapiens GN=RGSL1 PE=2 SV=1	
	NSUN		
	6_HU		
308	MAN	Putative methyltransferase NSUN6 OS=Homo sapiens GN=NSUN6 PE=1 SV=1	
	INT2_		
	HUMA		
309	N	Integrator complex subunit 2 OS=Homo sapiens GN=INTS2 PE=1 SV=2	

	HELB_	
	HUMA	
310	N	DNA helicase B OS=Homo sapiens GN=HELB PE=1 SV=2
	PZRN4	
	_HUM	
311	AN	PDZ domain-containing RING finger protein 4 OS=Homo sapiens GN=PDZRN4 PE=2 SV=3
	FIBA_	
	HUMA	
312	N	Fibrinogen alpha chain OS=Homo sapiens GN=FGA PE=1 SV=2
	H6ST1	
	_HUM	
313	AN	Heparan-sulfate 6-O-sulfotransferase 1 OS=Homo sapiens GN=HS6ST1 PE=1 SV=5
	CO039	
	_HUM	
314	AN	Uncharacterized protein C15orf39 OS=Homo sapiens GN=C15orf39 PE=1 SV=3
	ANXA	
	2_HU	
315	MAN	Annexin A2 OS=Homo sapiens GN=ANXA2 PE=1 SV=2
	DPP4	
	HUMA	
316	N	Dipeptidyl peptidase 4 OS=Homo sapiens GN=DPP4 PE=1 SV=2
	TPRN_	
	HUMA	
317	N	Taperin OS=Homo sapiens GN=TPRN PE=1 SV=2
	PANX	
	2_HU	
318	MAN	Pannexin-2 OS=Homo sapiens GN=PANX2 PE=2 SV=2
	SUCA_	
	HUMA	
319	N	Succinate--CoA ligase [ADP/GDP-forming] subunit alpha, mitochondrial OS=Homo sapiens GN=SUCLG1 PE=1 SV=4
	KIF5C	
	_HUM	
320	AN	Kinesin heavy chain isoform 5C OS=Homo sapiens GN=KIF5C PE=1 SV=1
	FBLN7	
	_HUM	
321	AN	Fibulin-7 OS=Homo sapiens GN=FBLN7 PE=2 SV=1
	O10X1	
	_HUM	
322	AN	Olfactory receptor 10X1 OS=Homo sapiens GN=OR10X1 PE=3 SV=2
	NELFB	
	_HUM	
323	AN	Negative elongation factor B OS=Homo sapiens GN=NELFB PE=1 SV=1
	EF1A2	
	_HUM	
324	AN	Elongation factor 1-alpha 2 OS=Homo sapiens GN=EEF1A2 PE=1 SV=1
	EF1A3	
	_HUM	
325	AN	Putative elongation factor 1-alpha-like 3 OS=Homo sapiens GN=EEF1A1P5 PE=5 SV=1
	EF1A1	
	_HUM	
326	AN	Elongation factor 1-alpha 1 OS=Homo sapiens GN=EEF1A1 PE=1 SV=1
	CC177	
	_HUM	
327	AN	Coiled-coil domain-containing protein 177 OS=Homo sapiens GN=CCDC177 PE=2 SV=3
	ANR28	
	_HUM	
328	AN	Serine/threonine-protein phosphatase 6 regulatory ankyrin repeat subunit A OS=Homo sapiens GN=ANKRD28 PE=1 SV=5
	ZN461	
	_HUM	
329	AN	Zinc finger protein 461 OS=Homo sapiens GN=ZNF461 PE=2 SV=2
	B3GN8	
	_HUM	
330	AN	UDP-GlcNAc:betaGal beta-1,3-N-acetylglucosaminyltransferase 8 OS=Homo sapiens GN=B3GNT8 PE=1 SV=1
	IST1	
	_HUMA	
331	N	IST1 homolog OS=Homo sapiens GN=IST1 PE=1 SV=1
	SAP3	
	_HUMA	
332	N	Ganglioside GM2 activator OS=Homo sapiens GN=GM2A PE=1 SV=4
	PKP1	
	_HUMA	
333	N	Plakophilin-1 OS=Homo sapiens GN=PKP1 PE=1 SV=2
	SYLC	
	_HUMA	
334	N	Leucine--tRNA ligase, cytoplasmic OS=Homo sapiens GN=LARS PE=1 SV=2

	DRGX	
	_HUM	
335	AN	Dorsal root ganglia homeobox protein OS=Homo sapiens GN=DRGX PE=3 SV=1
	NEST	
	HUMA	
336	N	Nestin OS=Homo sapiens GN=NES PE=1 SV=2
	MUC5	
	B_HU	
337	MAN	Mucin-5B OS=Homo sapiens GN=MUC5B PE=1 SV=3
	MCM2	
	_HUM	
338	AN	DNA replication licensing factor MCM2 OS=Homo sapiens GN=MCM2 PE=1 SV=4
	RFC3	
	HUMA	
339	N	Replication factor C subunit 3 OS=Homo sapiens GN=RFC3 PE=1 SV=2
	LTN1	
	HUMA	
340	N	E3 ubiquitin-protein ligase listerin OS=Homo sapiens GN=LTN1 PE=1 SV=6
	CLIP1	
	HUMA	
341	N	CAP-Gly domain-containing linker protein 1 OS=Homo sapiens GN=CLIP1 PE=1 SV=2
	CD59	
	HUMA	
342	N	CD59 glycoprotein OS=Homo sapiens GN=CD59 PE=1 SV=1
	LZTS3	
	_HUM	
343	AN	Leucine zipper putative tumor suppressor 3 OS=Homo sapiens GN=LZTS3 PE=2 SV=1
	NAT8	
	B_HU	
344	MAN	Putative N-acetyltransferase 8B OS=Homo sapiens GN=NAT8B PE=5 SV=1
	IL23R	
	HUMA	
345	N	Interleukin-23 receptor OS=Homo sapiens GN=IL23R PE=1 SV=3
	PRR14	
	_HUM	
346	AN	Proline-rich protein 14 OS=Homo sapiens GN=PRR14 PE=1 SV=1
	MARK	
	1_HU	
347	MAN	Serine/threonine-protein kinase MARK1 OS=Homo sapiens GN=MARK1 PE=1 SV=2
	EVI2A	
	_HUM	
348	AN	Protein EVI2A OS=Homo sapiens GN=EVI2A PE=2 SV=2
	DEN5	
	B_HU	
349	MAN	DENN domain-containing protein 5B OS=Homo sapiens GN=DENND5B PE=1 SV=2
	LITD1	
	_HUM	
350	AN	LINE-1 type transposase domain-containing protein 1 OS=Homo sapiens GN=LITD1 PE=1 SV=1
	RIF1	
	HUMA	
351	N	Telomere-associated protein RIF1 OS=Homo sapiens GN=RIF1 PE=1 SV=2
	LYNX	
	1_HU	
352	MAN	Ly-6/neurotoxin-like protein 1 OS=Homo sapiens GN=LYNX1 PE=1 SV=3
	RHG07	
	_HUM	
353	AN	Rho GTPase-activating protein 7 OS=Homo sapiens GN=DLC1 PE=1 SV=4
	CFA58	
	_HUM	
354	AN	Cilia- and flagella-associated protein 58 OS=Homo sapiens GN=CFAP58 PE=1 SV=1
	VP13C	
	_HUM	
355	AN	Vacuolar protein sorting-associated protein 13C OS=Homo sapiens GN=VPS13C PE=1 SV=1
	GELS	
	HUMA	
356	N	Gelsolin OS=Homo sapiens GN=GSN PE=1 SV=1
	HEYL	
	HUMA	
357	N	Hairy/enhancer-of-split related with YRPW motif-like protein OS=Homo sapiens GN=HEYL PE=1 SV=2
	TCF20	
	_HUM	
358	AN	Transcription factor 20 OS=Homo sapiens GN=TCF20 PE=1 SV=3
	FBLN5	
	_HUM	
359	AN	Fibulin-5 OS=Homo sapiens GN=FBLN5 PE=1 SV=1
